

HOW TO USE THE DEMO WEB-YACHT

*Welcome to the Web-Yacht demo!
Or how to know how your boat is when you're not on board!*

On your PC go to irma.web-yacht.com.

On your tablet or mobile phone, download the WebYacht App and click on Demo.

The demo boat, Irma La Dolce, is based in Genoa and is equipped with Web-Yacht since 2014.

On the top there are the three buttons for the three panels: BOAT, MONITOR and MAP



BOAT panel



On the **Boat** panel the owner sets the picture and the name of his boat.

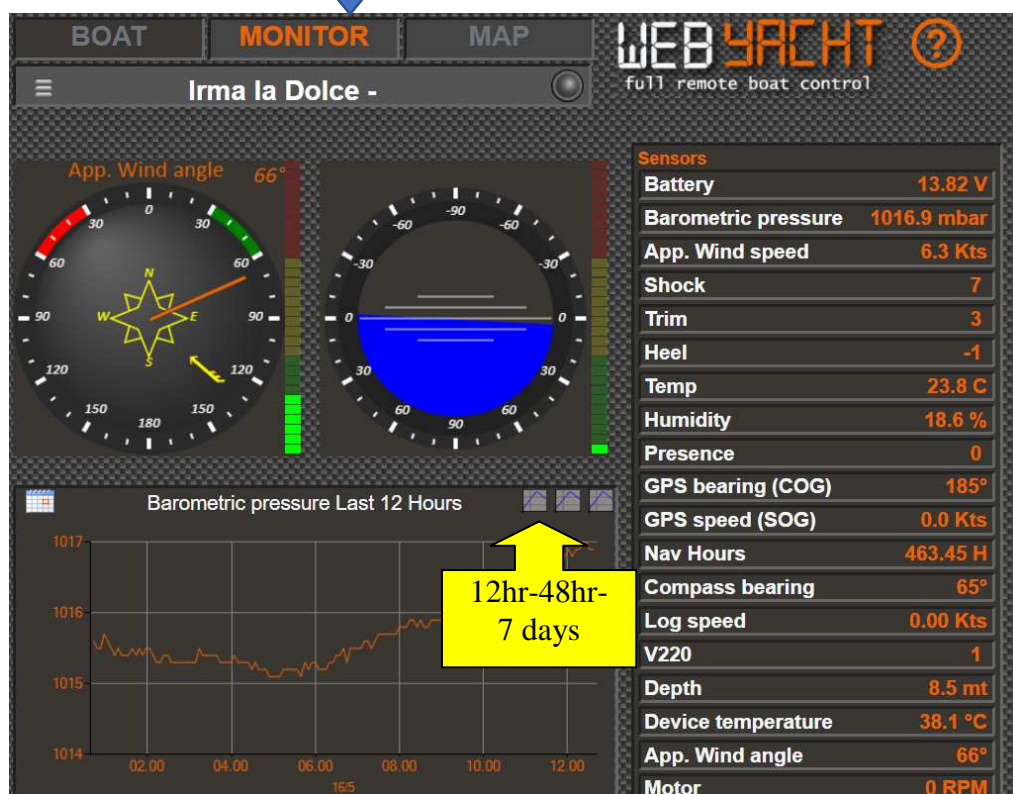
On the right, "**Switch**" corresponds to the domotics part, where you can turn on or off lights, refrigerator, heating, etc. remotely.

Below is the **Alarms** section, which can be set to receive text messages on up to 3 phone numbers, in case an alarm is triggered.

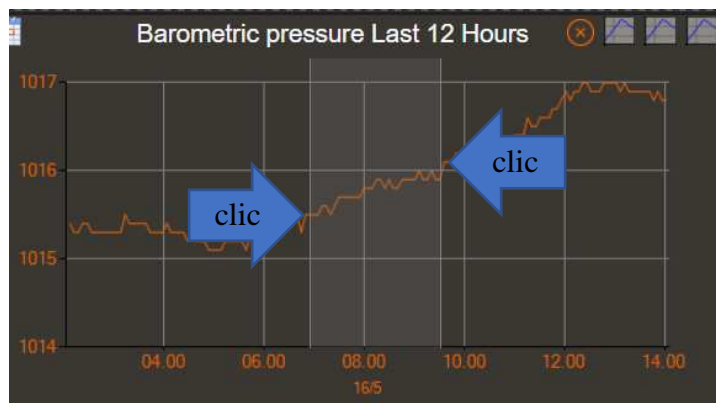
WEB YACHT

full remote boat control

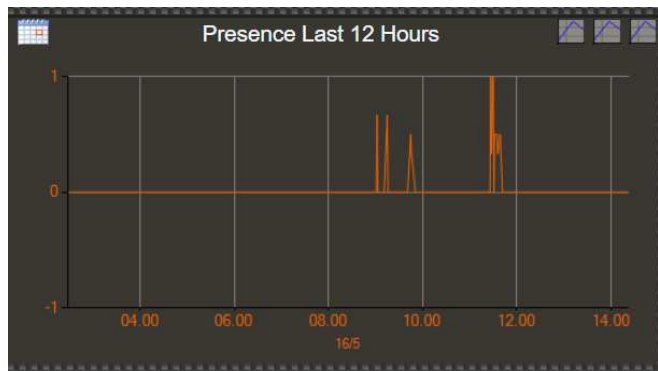
MONITOR panel clic



On the **Monitor** panel: on the right, **Sensors** represents all instrument values in real time. By clicking on any one, the graph for that value appears on the left. In the graph there are buttons to see the last 12 hours, 2 days or 7 days (click on the top right of the graph to change).

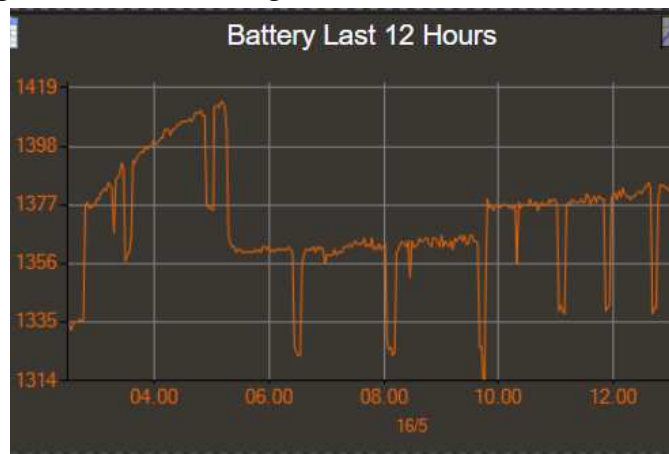
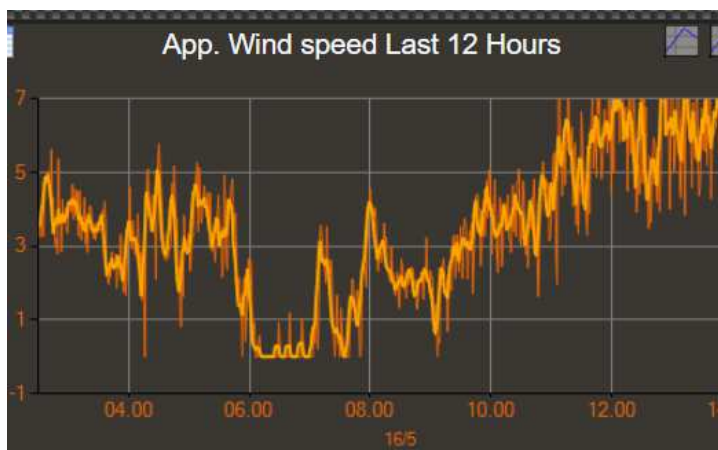


It is also possible to **ZOOM** in the graph from one point to another by first clicking the first point, then the second. The graph will zoom into the clicked area.



For example, you can click on "**Presence**" and see on the graph every time someone has entered the boat! ...
You can also zoom them to get the time with more precision.

Also the apparent wind or the battery charge are interesting values for the owner ...



Mese **5** Anno **2018** Cerca

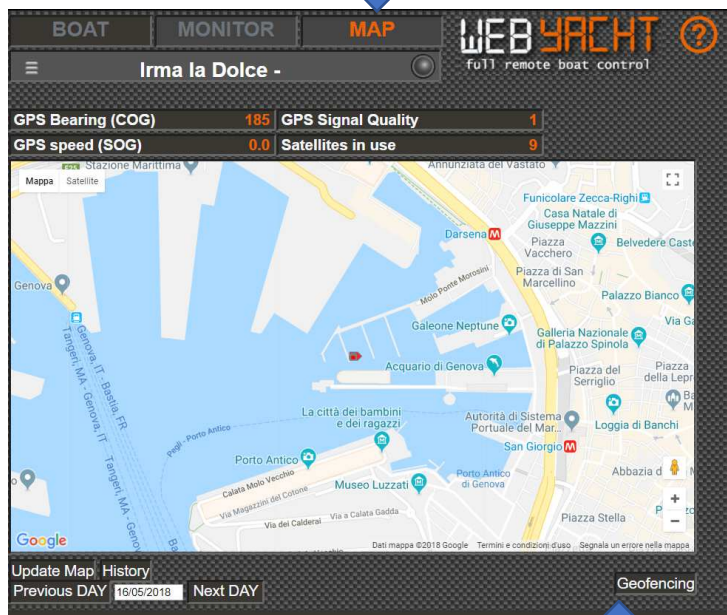
Giorno	Ore Navigazione	Ore Motore
2018-5-1	0	0
2018-5-2	0,45	0
2018-5-3	0,46	0
2018-5-4	0,27	0
2018-5-5	2,98	0
2018-5-6	2,87	0
2018-5-7	0,05	0
2018-5-8	0,04	0
2018-5-9	0	0
2018-5-10	0,01	0
2018-5-11	0	0
2018-5-12	0	0

Just like clicking on "Nav Hours", the owner has a detailed account of the hours sailed, motor or sail, to better plan the maintenance of the boat.

WEB YACHT

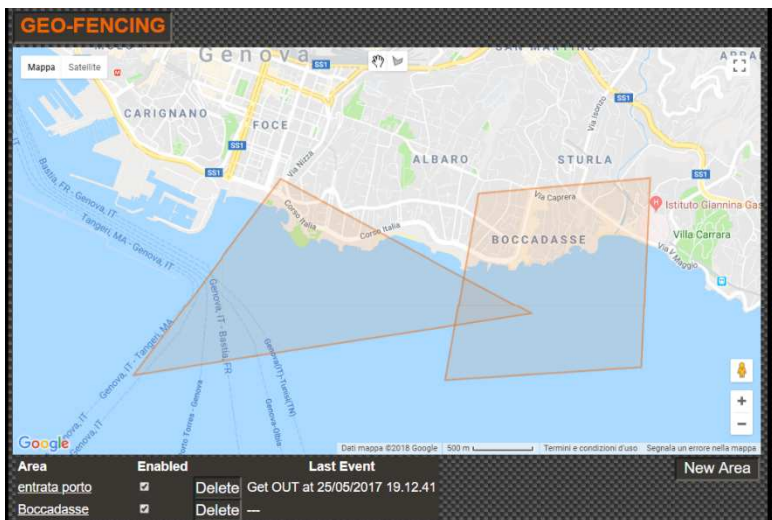
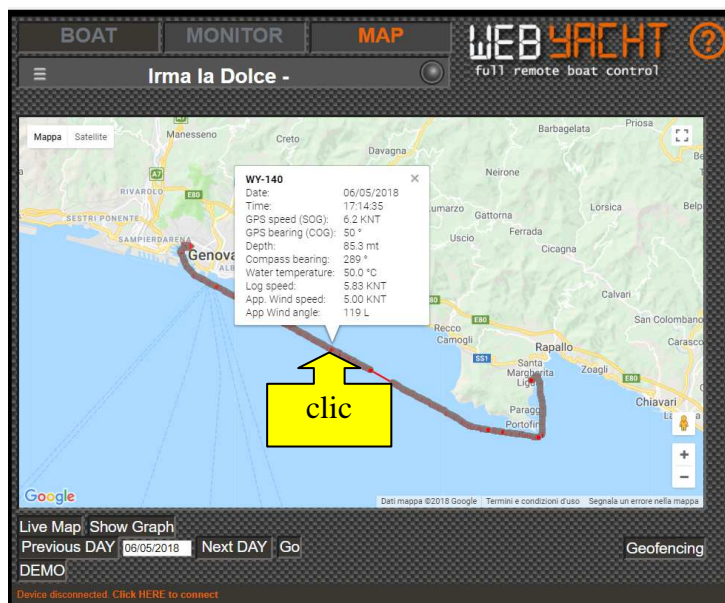
full remote boat control

MAP Panel



The **MAP** panel

- shows where the boat is located in real time.
- On the bottom left is the history: for example by entering 06/05/2018, then clicking "history" you can see a sailing of the boat. By placing the mouse on any point of the navigation, all the instruments are displayed (wind, speed, depth, etc.).



- By clicking on "**Geofencing**" you can draw areas on the map and receive alarm SMS if the boat enters or leaves the perimeter